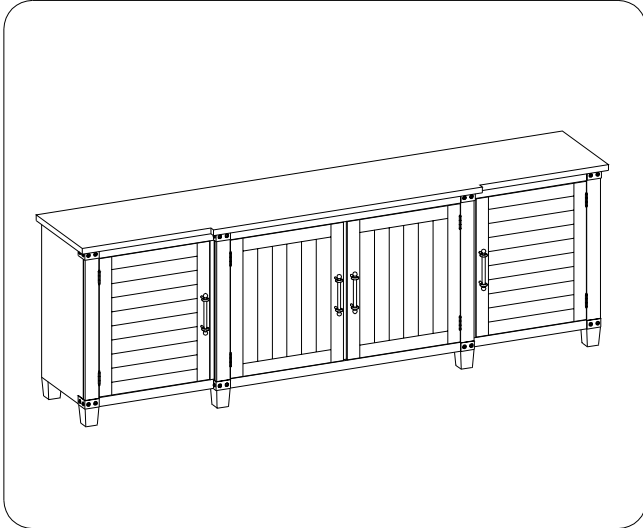




ITEM NO: I349-297-WST 96" Console

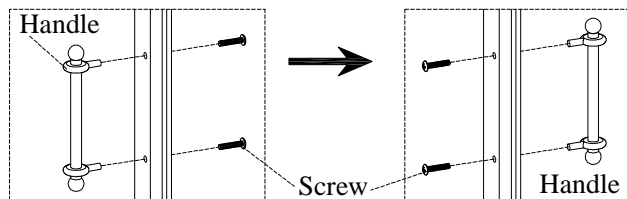
Thank you for purchasing this quality product. Be sure to check all packing material carefully for small parts that may come loose inside the carton during shipment.



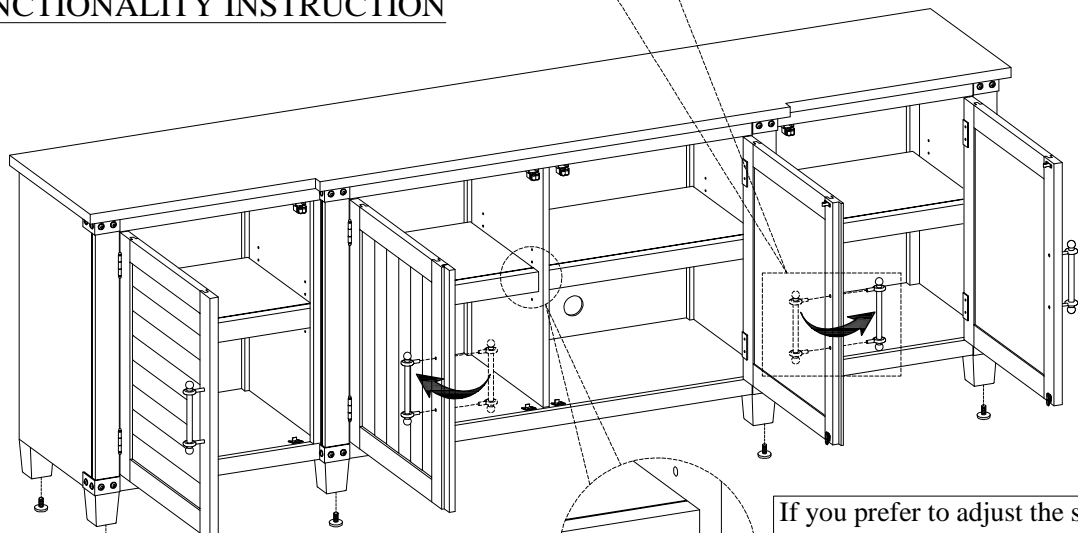
TOOLS REQUIRED (NOT PROVIDED)

PHILLIPS SCREWDRIVER 

STEP 1: Reverse each handle by removing the screws while opening each door in the middle and attach all handles to the front of middle doors with screws as shown below.



FUNCTIONALITY INSTRUCTION



Leveler on Legs & Support Leg
Adjust the leveler
when necessary

If you prefer to adjust the shelf
location, remove the screws and
move shelf brackets to the
desired location. Then secure the
brackets to shelf with screws.

BEFORE USING THIS PRODUCT PLEASE READ, UNDERSTAND, AND FOLLOW THESE INSTRUCTIONS.
Save these instructions for future reference.

FOR INDOOR USE ONLY