



ITEM NO: I349-9101-WST      Lift Top Cocktail Table





Thank you for purchasing this quality product. Be sure to check all packing material carefully for small parts that may come loose inside the carton during shipment.






**TOOLS REQUIRED (NOT PROVIDED)**

PHILLIPS SCREWDRIVER 

**HARDWARE LIST:**

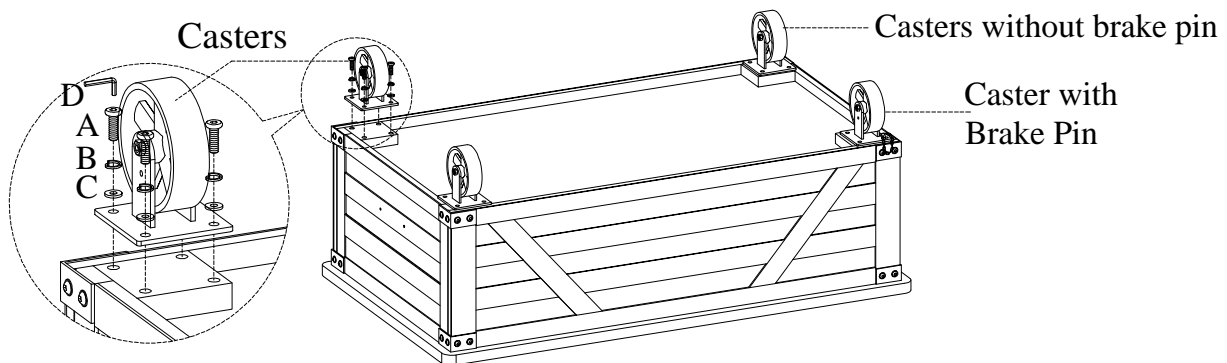
No.	Description	Sketch	Quantity
A	Bolt Ø1/4" x 3/4"		16 PCS
B	Lock Washer Ø1/4"		16 PCS
C	Flat Washer Ø1/4" x 3/4"		16 PCS
D	Allen Wrench 4mm		1 PC

**COMPONENTS LIST:**

No.	Description	Sketch	Quantity
1	Table Top		1 PC
2	Caster with brake pin		1 PC
3	Casters without brake pin		3 PCS

**STEP 1:** Put the table top face down on a soft surface. Attach the casters to the underside of bottom shelf by using 16 bolts(A), lock washers(B) and flat washers(C). Return the assembled table to the upright position.

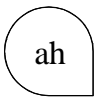
Note: Starting from the front left hand corner of the unit install the caster with brake pin, then finish installing the remaining three.



**BEFORE USING THIS PRODUCT PLEASE READ, UNDERSTAND, AND FOLLOW THESE INSTRUCTIONS.**

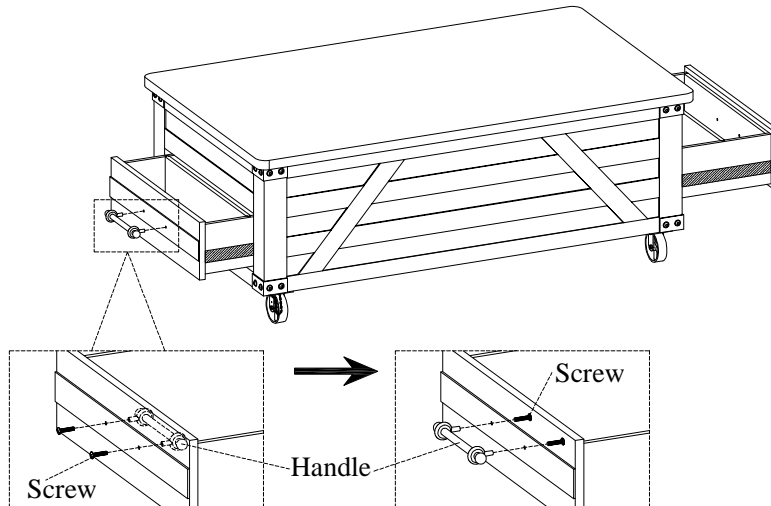
Save these instructions for future reference.

FOR INDOOR USE ONLY



ITEM NO: I349-9101-WST      Lift Top Cocktail Table

**STEP 2:** Reverse each handle by removing the screws while each drawer is open and attach all handles to the front of the drawers with screws as shown below.



### FUNCTIONALITY INSTRUCTION

When the table is in a stationary position, ALWAYS use the brake pin by inserting it into the wheel fork as shown below.

